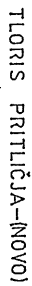
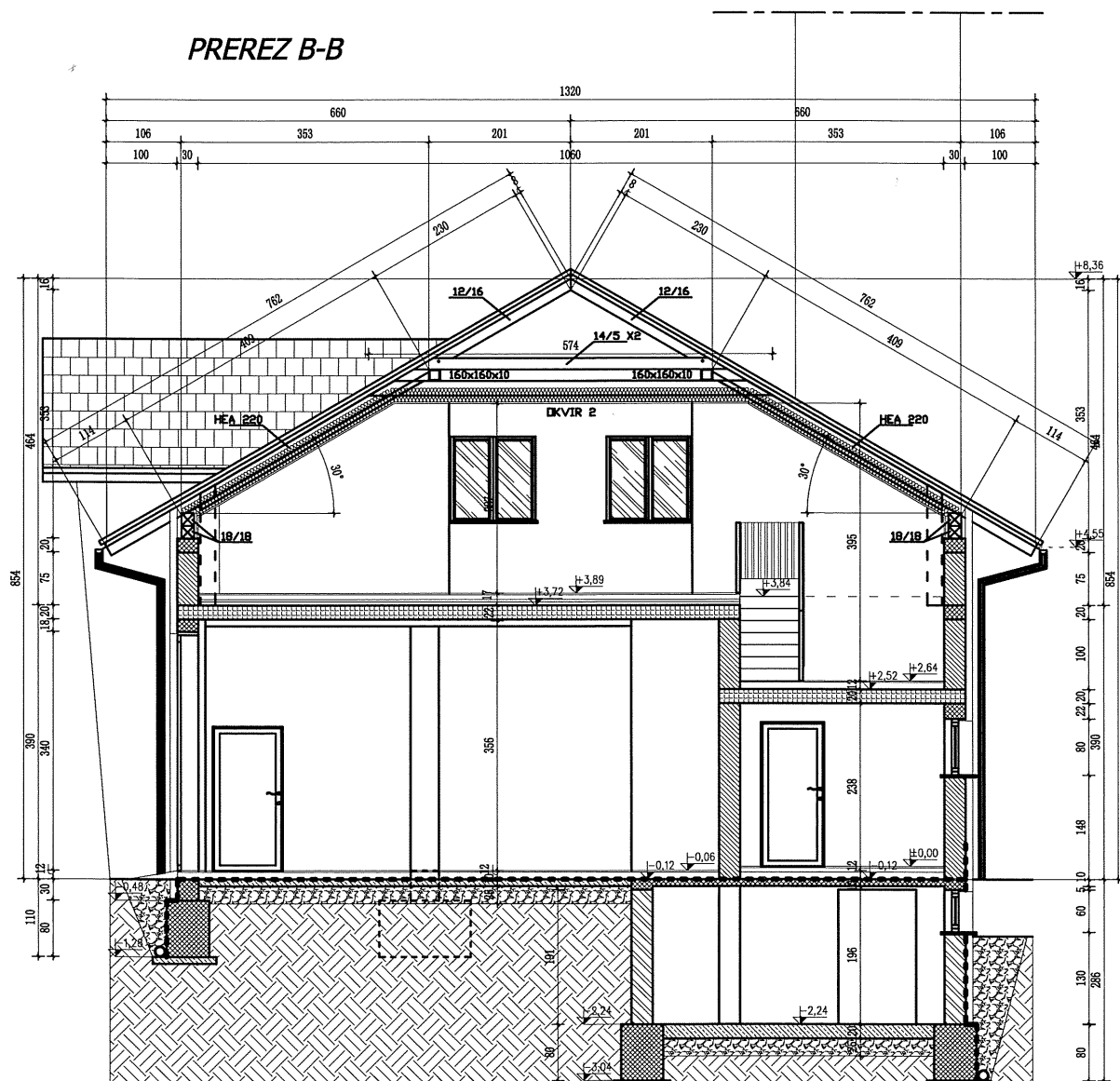
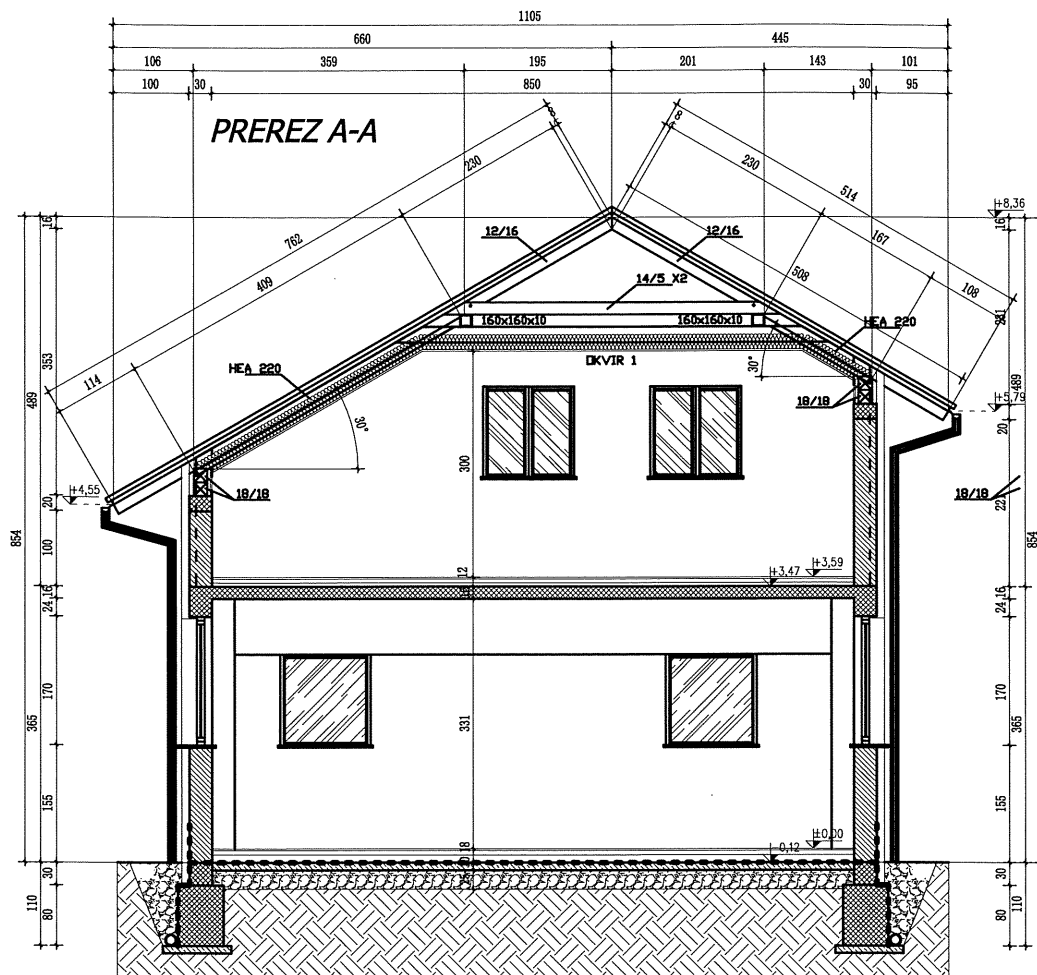
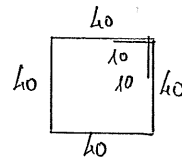
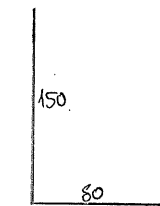
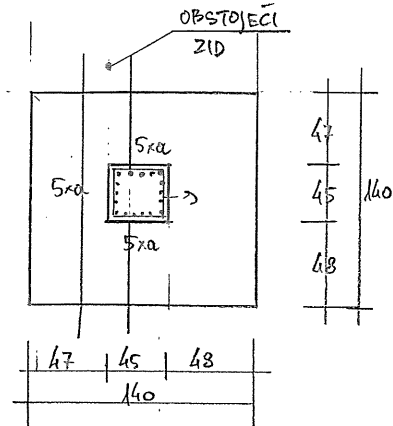
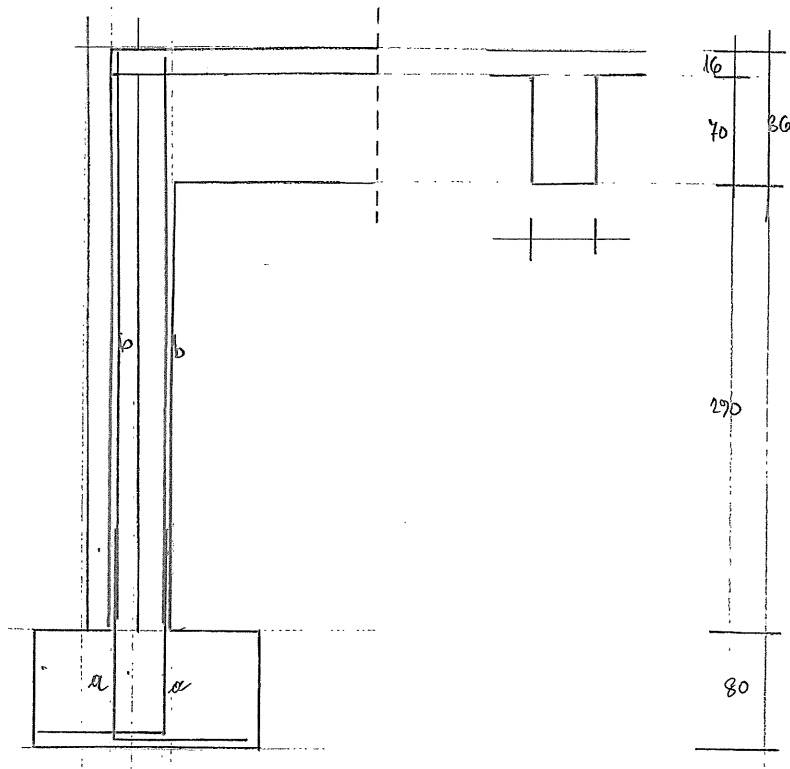


POLOŽAJ STEBROV, PREKLAD IN NOSILCEV





STEBER S₁ (kom 4)



a.) 16 φ 20 RA $l_1 = 2.30 \text{ kom}$

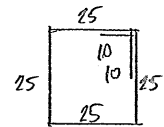
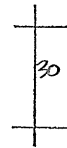
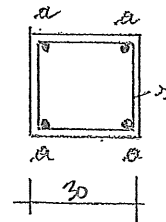
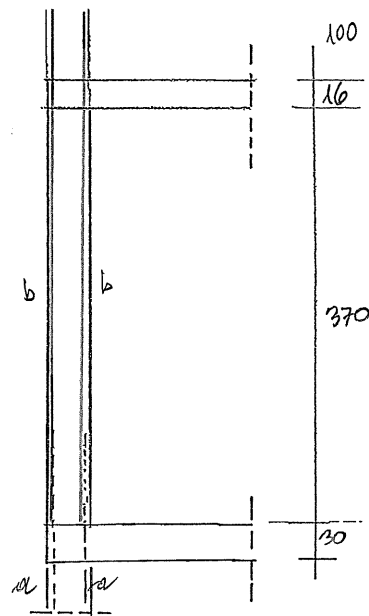
b.) 8 RA $l_1 = 1.80 \text{ m}$ $l = 15 \text{ cm}$
Σ kom 22 / 1 stebér

b.) 16 φ 20 RA $l_1 = 3.70 \text{ m}$

STEBER	ŠT STEBROY	POZ	φ	kom	Σ kom	l_1	kg/m'	Σ kg
	4	a	20	16	64	2.30	3.092	455.14
		b	20	16	64	3.70	3.092	732.19
		c	8	22	88	1.80	0.405	64.15

1251.48 kg RA
za 1 stebér

II. VERTIKALNA ZIDNA VEZ - STEBER S₂ (kom 2)



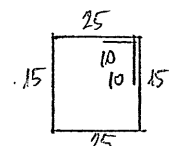
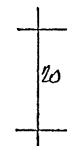
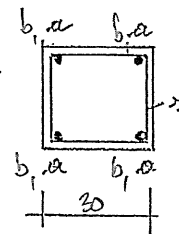
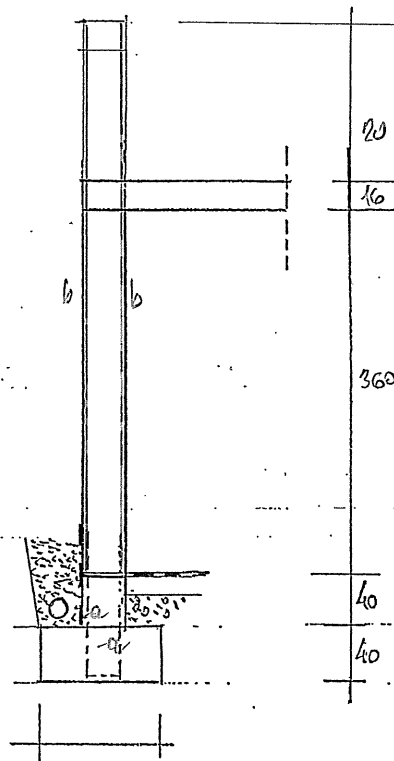
1.) $\phi 8$ RA $l_1 = 1.20$ m
 $l = 20$ cm

a.) $\phi 14$ RA $l_1 = 1.00$ m vidno mo v temelju
b.) $\phi 14$ RA $l_1 = 5.10$ m

VEZ	ŠT. VEZI	POZ	ϕ	kom	Škom	l_1	kg/m	Σ kg
S ₂	2	a	14	4	8	1.00	1.252	10.02
		b	14	6	8	5.10	1.252	51.08
		c	8	25	50	1.20	0.409	24.54

85.64 kg RA

III. VERTIKALNA ZIDNA VEZ - STEBER S₃ (kom 1)



1.) $\phi 8$ RA $l_1 = 1.00$ m $l = 20$
 Σ kom 24 / 1000 cm

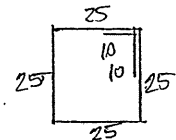
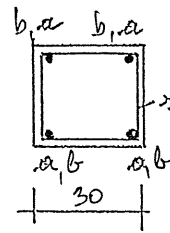
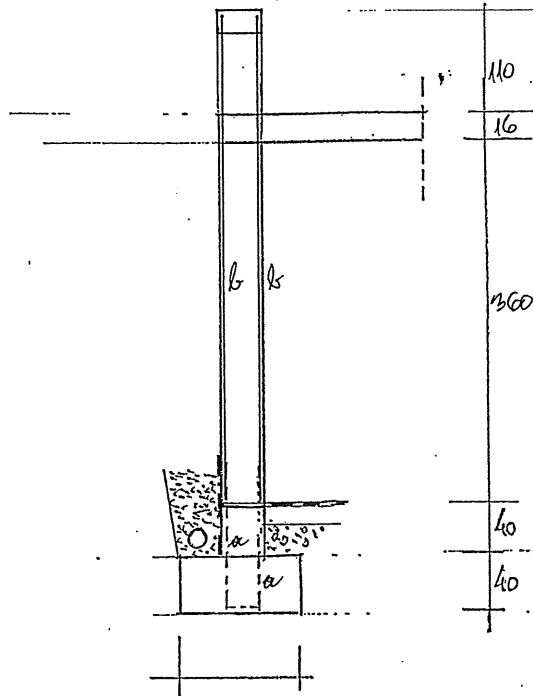
a.) $\phi 14$ RA $l_1 = 1.70$ m

b.) $\phi 14$ RA $l_1 = 3.90$ m

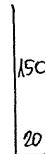
VEZ	ŠT. VEZI	POZ	ϕ	kom	Škom	l_1	kg/m	Σ kg
S ₃	1	a	14	4	4	1.70	1.252	8.51
		b	14	4	4	3.90	1.252	19.53
		c	8	20	20	1.00	0.409	8.18

36.22 kg RA

II. VERTIKALNA ZIDNA VEZ - STEBER S4 (kom 5)



2.) $\phi 8$ RA $l_1 = 1.20$ m
kom 24 $l = 20$ cm

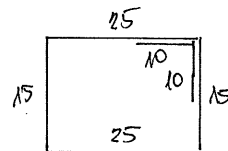
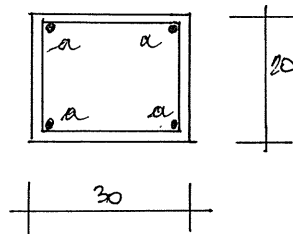


a.) $\phi 14$ RA $l_1 = 1.70$ m

b.) $4 \phi 14$ RA $l_1 = 4.90$ m

VEZ	ŠT. VEZI	POZ	ϕ	kom	Σ kom	l_1	kg/m	Σ kg
S4	5	a	14	4	20	1.70	1.252	42.57
		b	14	4	20	4.90	1.252	122.40
		c	8	24	120	28.80	0.409	11.78
								177.05 kg RA

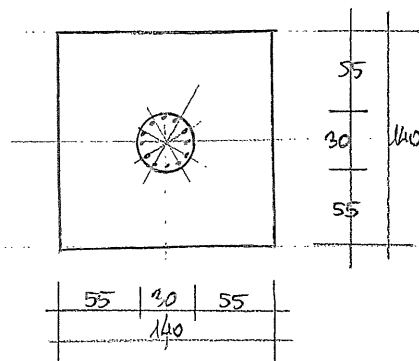
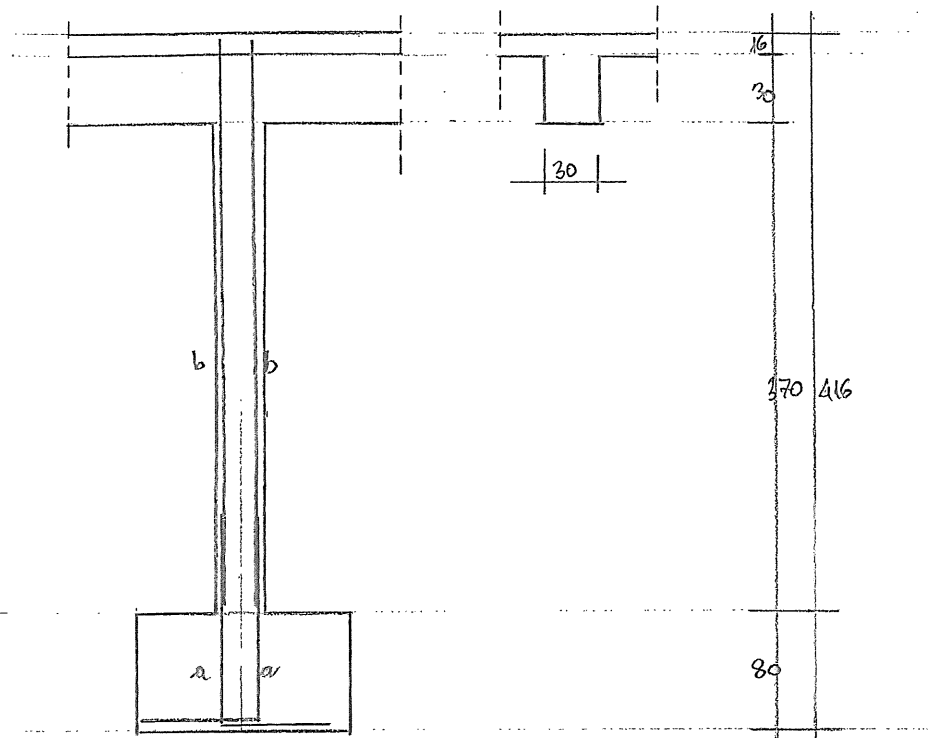
III. HORIZONTALNE IN POŠEVNE VEZI



2.) $\phi 8$ RA/20 cm $l_1 = 1.00$ m

a.) $4 \phi 14$ RA $l_1 = 6.00$ m
preklop 40 cm

STEBER S5 (kom 1)



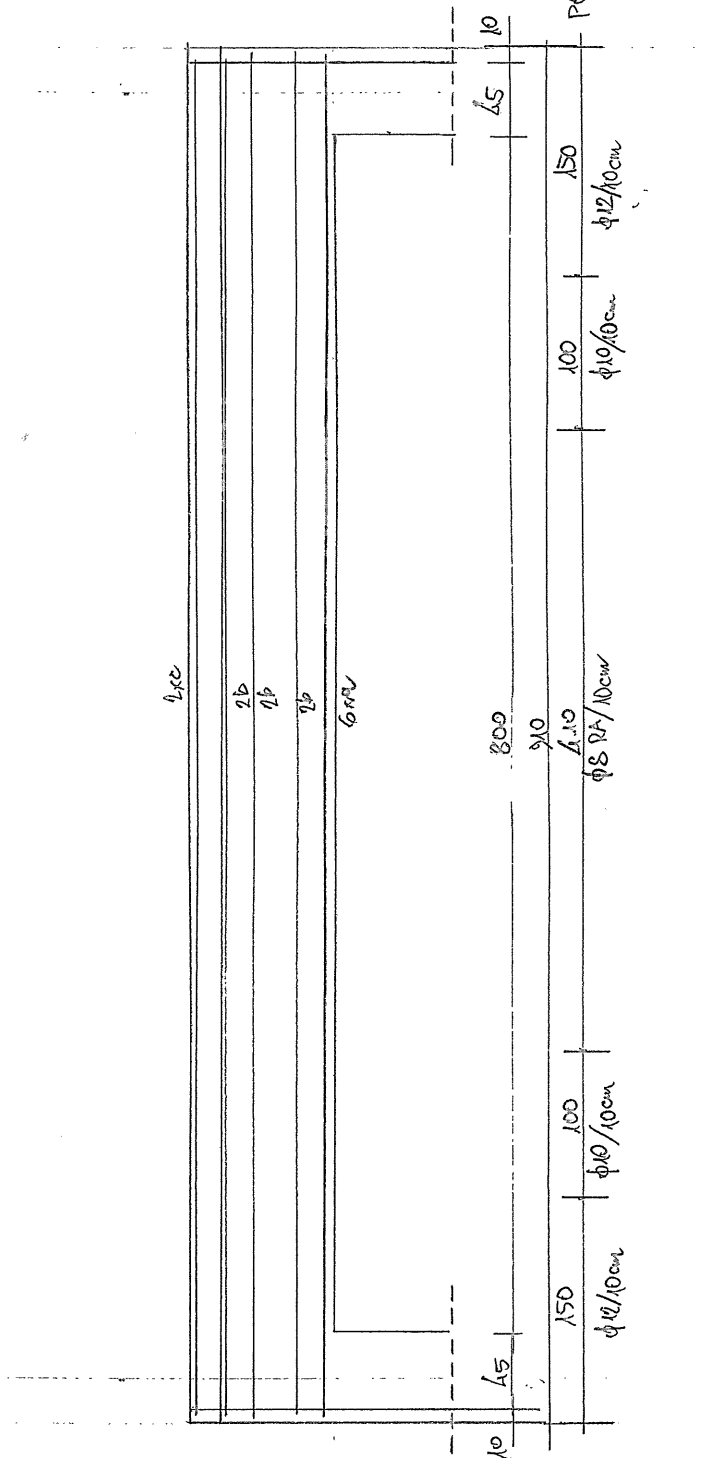
н) нтвене ррпнрлнр $\phi 8RA/15cm$
 $\Sigma kom 24/steber$

a.) $12 \phi 12 RA l_1 = 2.30m$

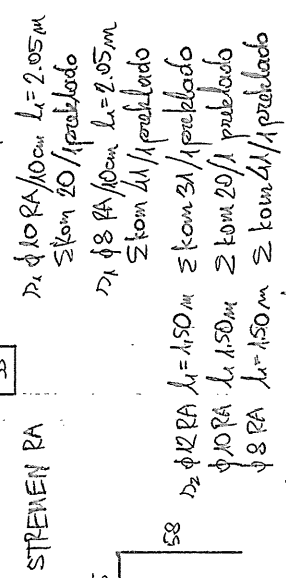
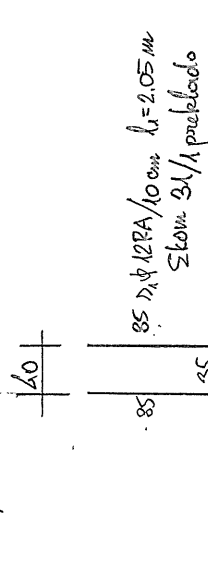
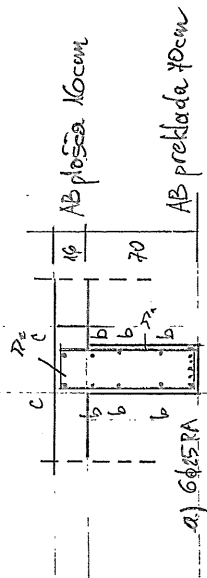
b.) $12 \phi 12 RA l_1 = 3.70m$

STEBER	ST. STEBROY	POZ	ϕ	kom	Σkom	l_1	kg/m'	Σkg
	1	a	12	12	12	2.30	0.92	25.39
		b	12	12	12	3.70	0.92	40.85
		н	8	24	24	0.49	0.409	7.85

43.99 kg RA

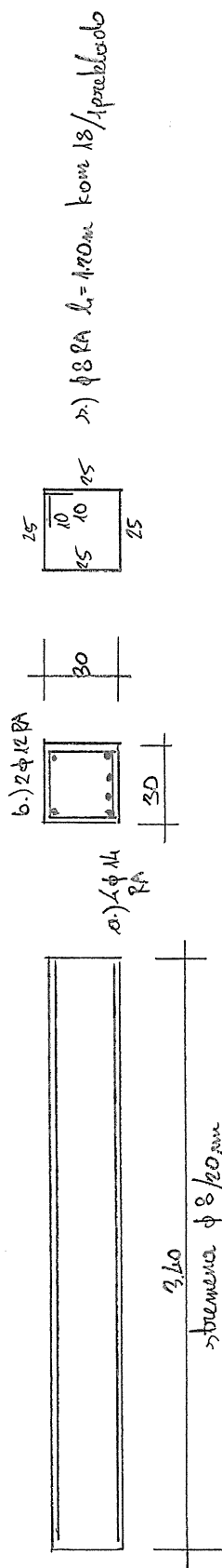


- a.) $\phi 25$ RA $l_1 = 9.00m$
 b.) $\phi 8$ RA $l_1 = 9.00m$
 c.) $2 \phi 16$ RA $l_1 = 9.00m$



Struna D2 za montažu po montaži mreže

NOSILEC N1 - IZDELATI 2 KOMA



a.) 2φ14 RA $\lambda_c = 340 \text{ mm}$
 b.) 2φ12 RA $\lambda_c = 340 \text{ mm}$

a.) 2φ14 RA $\lambda_c = 340 \text{ mm}$
 b.) 2φ12 RA $\lambda_c = 340 \text{ mm}$

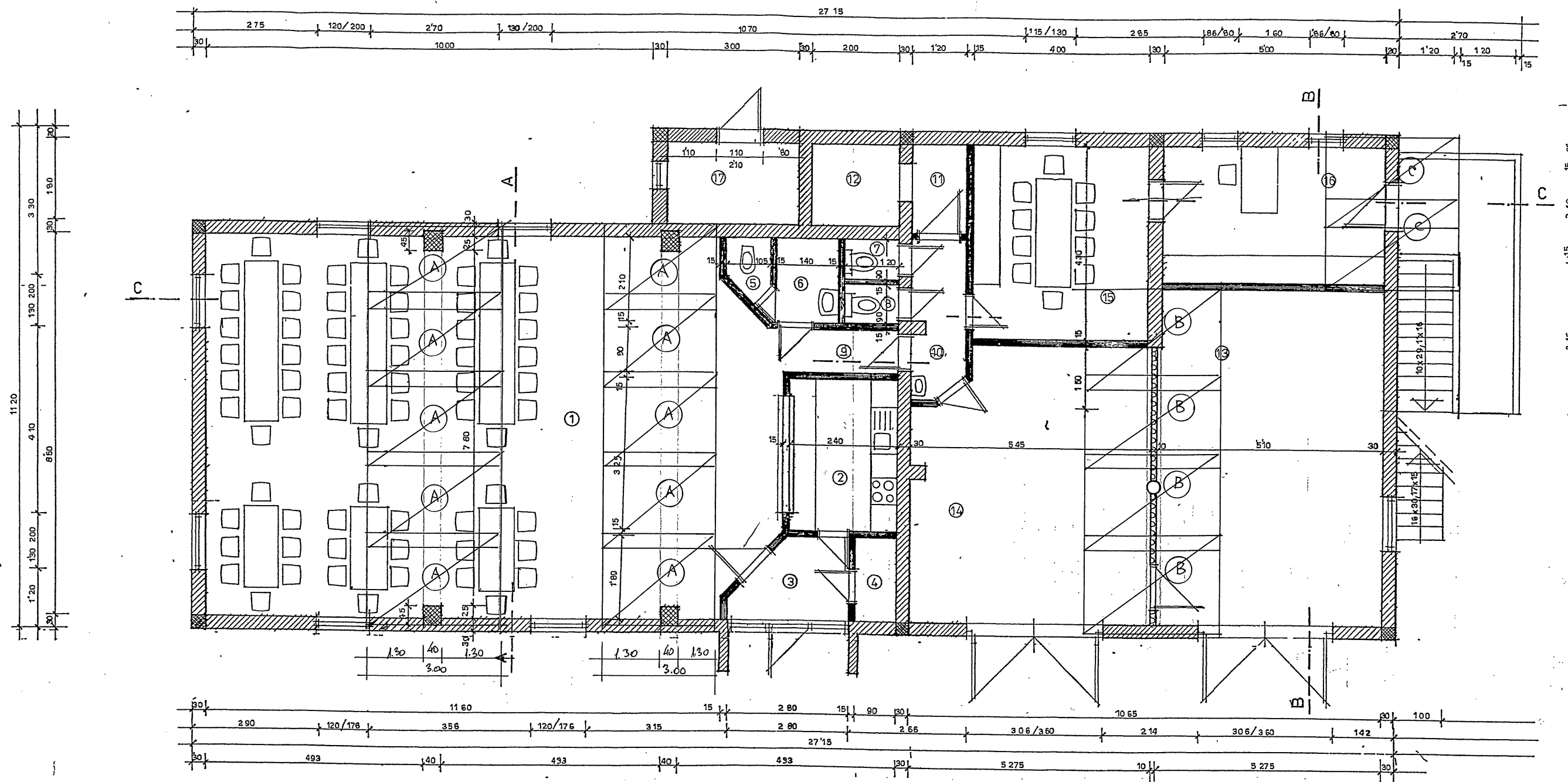
PREKLADA P_k (PRE-4)

ARMATURA PLOŠČE ZGORAJ

A.) R785 2.15 x 3.00 kom 10

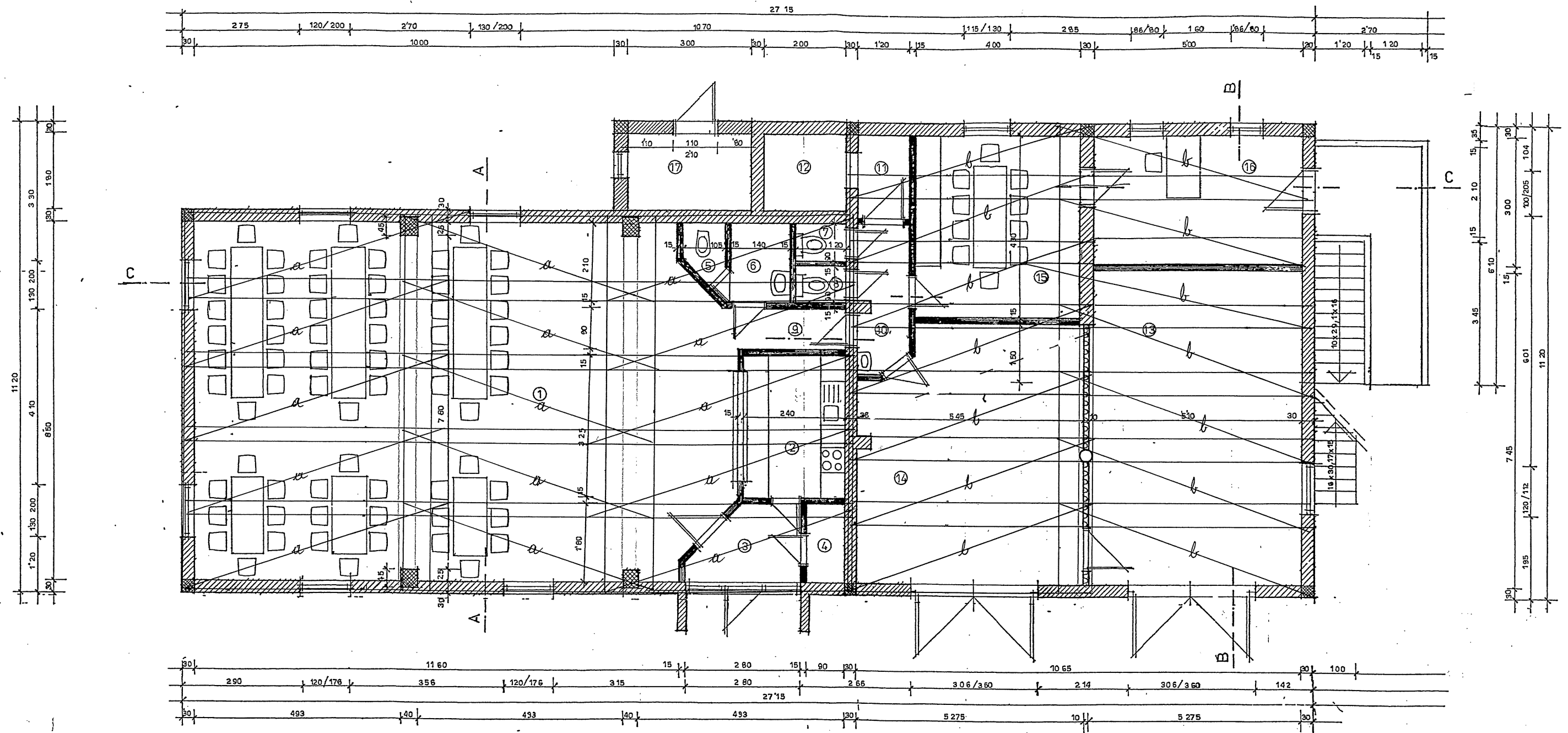
B.) R785 2.15 x 3.00 kom 4

C.) R385 2.15 x 3.00 kom 2



TLORIS PRITLIČJA-(NOVO)

ARMATURA PLOŠČE SPODAJ
 a.) R 503 2.15 x 5.00 kom 15
 b.) R 503 2.15 x 5.00 kom 14



TLORIS PRITLIČJA-(NOVO)

