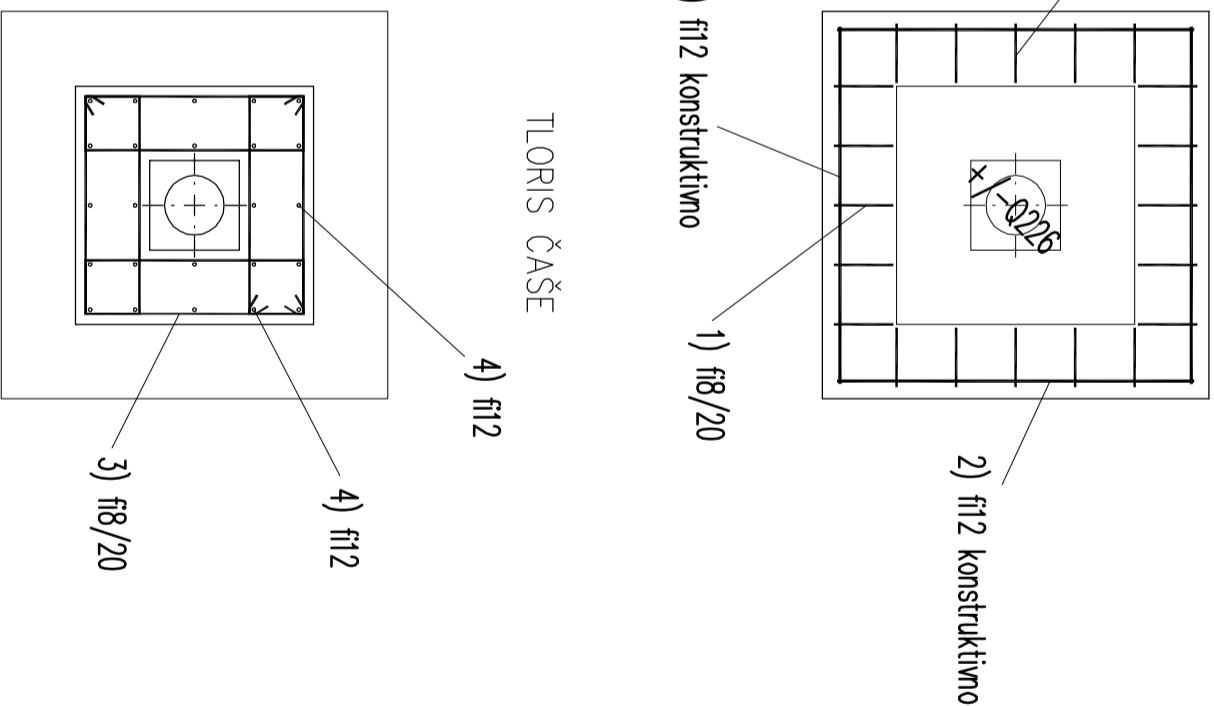
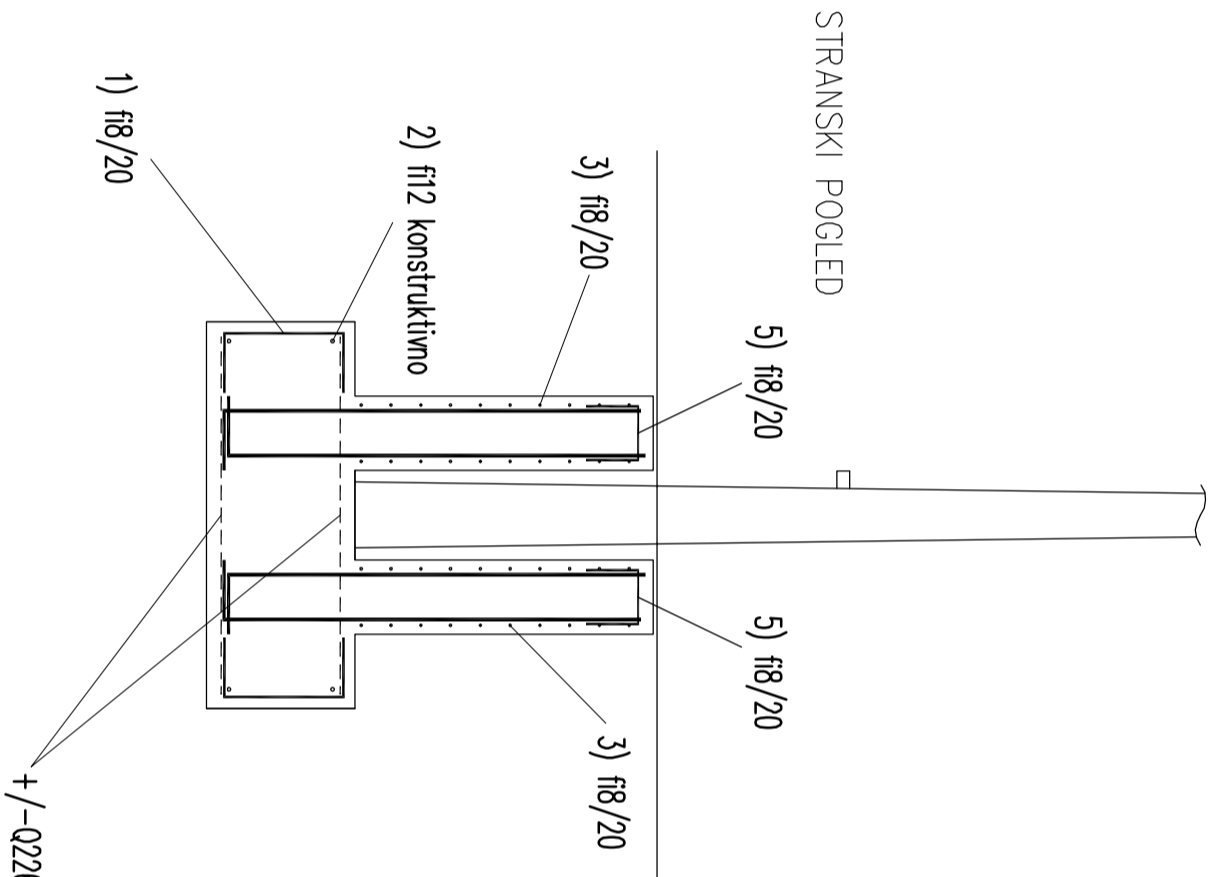
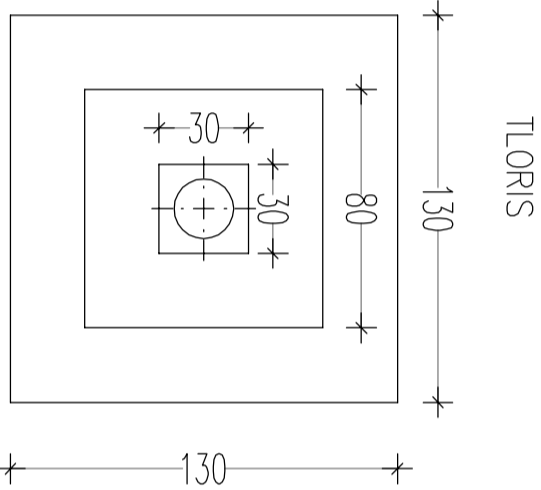
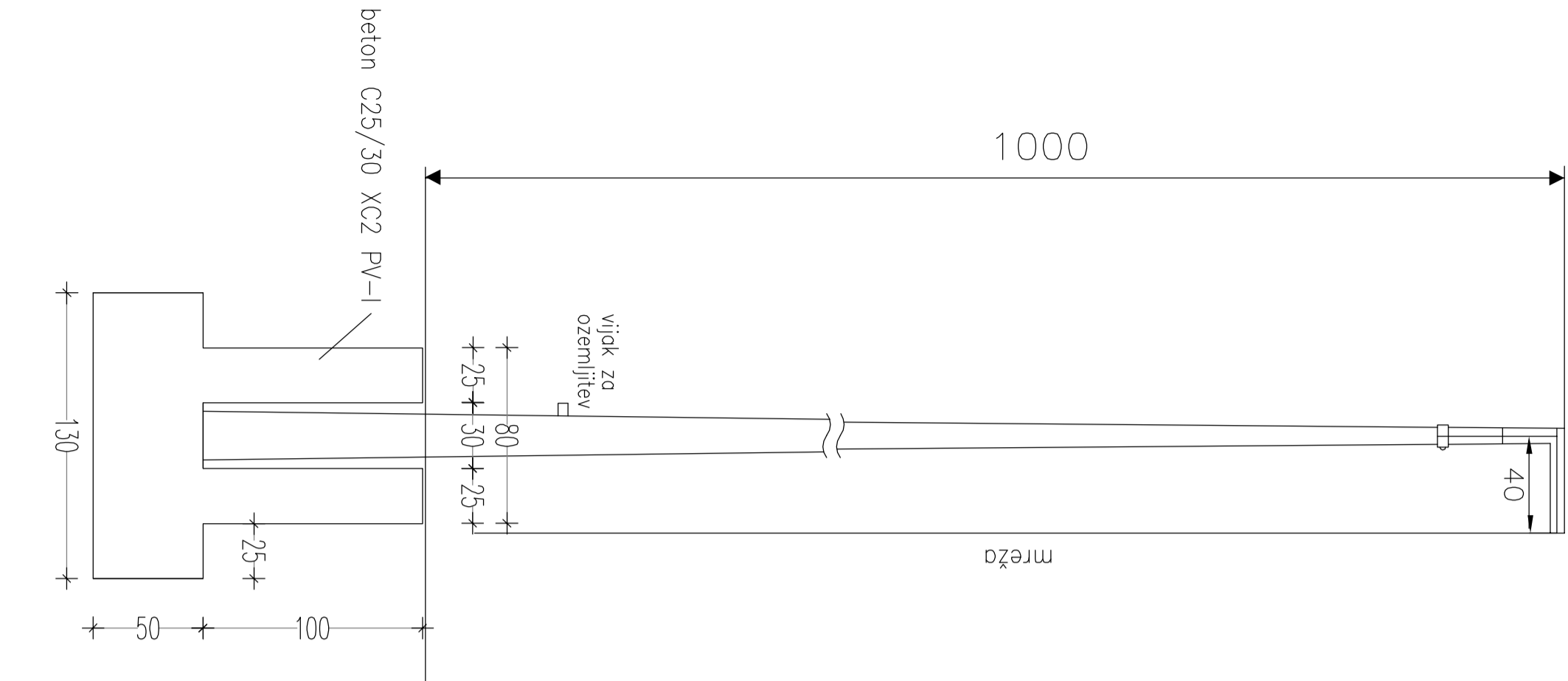


# TEMELJ STEBRA LOVILNE OGRAJE

OPAŽ

ARMATURA



1) f18/20 20 kom. = 7kg	
2) f112 konstruktivno 8 kom. = 9kg	
3) f18/20 40 kom. = 33kg	
4) f112 24 kom. = 36kg	
5) f18/20 16 kom. = 4kg	
Q226 3,50m <sup>2</sup> = 13kg	

skupaj armatura: 102kg < 80kg/m<sup>3</sup> betona

BETON C25/30 XC2 PV-I  
ARMATURA B500-B  
krovni sloj min. 35mm

Mentor: Bogdan, univ.dipl.inž.kult.teh. IZS G-2527		vrsta risbe:		TEMELJ STEBRA LOVILNE OGRAJE	
Luko Gromc, univ.dipl.inž.grad.		merilo: 1:50		vrsta projekta: PGD	
08050-20		08050-20		vrsta mreže: 3/1	
				št. risbe: 005	
				št. lista: 01	
				sprem.: 0	

